

CLADDING ZONE PER DESIGN

1 1/8"  
[28 mm]

- ① 28 mm thick NBK terracotta tile
- ② CLP30 Extruded aluminum clip
- ③ HTS30/HTS31 Alum. extruded carrier track
- ④ Extruded Aluminum Angle 6063 T6 2" x 2 1/2" x 3/16" x 0'-8"
- ⑤ Extruded Aluminum Angle 6063 T6 2" x 2 1/2" x 3/16" x 0'-6"
- ⑥ RS30/RS31 "shelf" clip
- ⑦ 1/4"-14 x 1" HWH S.S. Bi-Flex or similar (Not by NBK)
- ⑧ (3) 1/4"-20 x 1" HWH S.S. Bi-Flex or similar (Not by NBK)
- ⑨ 1/4"-14 x 2" HWH S.S. Bi-Flex or approved equal (Not by NBK)
- ⑩ Insulation per design (Not by NBK)
- ⑪ 5/8" GYP. Board sheathing with air & vapor barrier membrane (Not by NBK)
- ⑫ Vertical steel stud framing, min. 16 ga@ 16" centers (Not by NBK)
- ⑬ JTC clip - Anti-walking clip
- ⑭ (4) 1/4"-20 x 1 1/2" HWH S.S. Bi-Flex or similar (Not by NBK)
- ⑮ Thermal isolator-(Optional)

⑫

⑪

⑨

⑦

②

①

3/8"  
3/4"  
[10 mm]

⑥

③

⑦

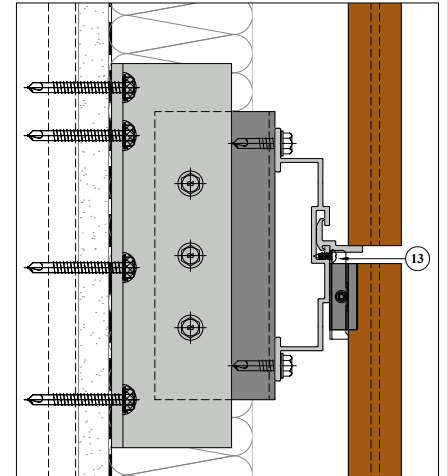
⑤

④

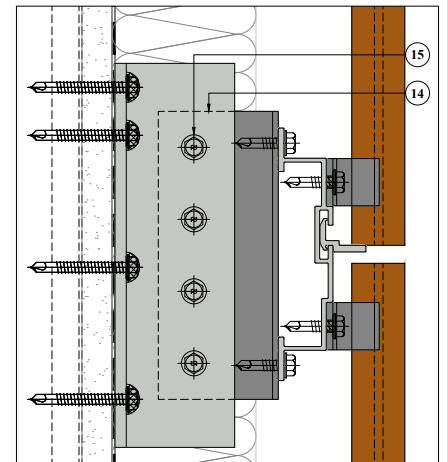
⑧

⑩

JTC ANTI-WALKING CLIP (1 PER TILE)



OPTIONAL THERMAL ISOLATOR



SYSTEM:

TERRART 28

DETAIL:

STANDARD STUDWALL DETAIL

DETAIL NUMBER:

NBK-VS-28-04

TILE DIRECTION:

VERTICAL

DRAWING REFERENCE:

VERTICAL SECTION

SCALE:

1:2

**NBK** ARCHITECTURAL  
TERRACOTTA  
A Hunter Douglas Company

**NBK North America**

10 Federal Street, Second Floor  
Salem, MA 01970  
Telephone: +1 (781) 639 2662  
www.nbkterracotta.com