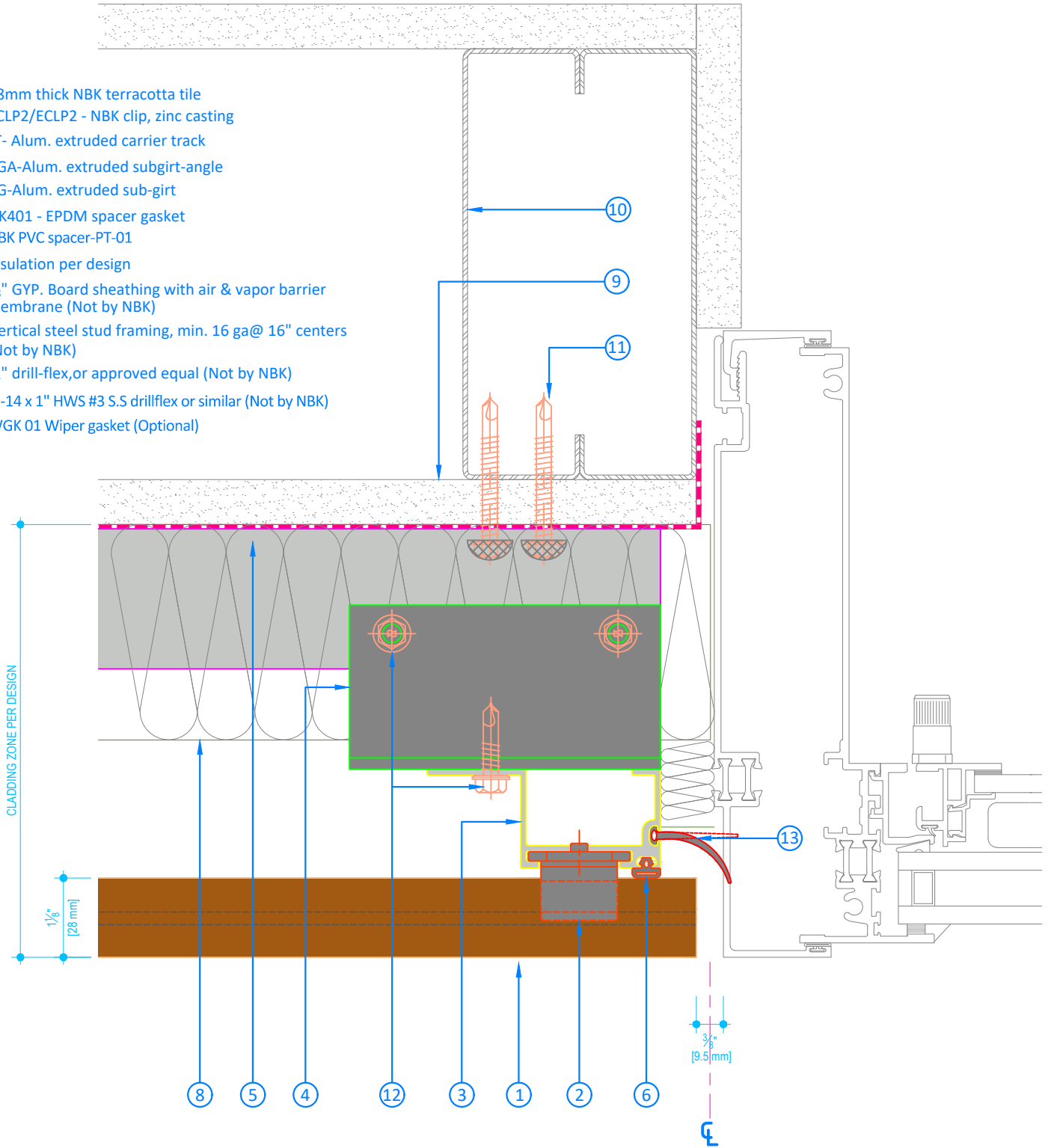


- ① 28mm thick NBK terracotta tile
- ② SCLP2/ECLP2 - NBK clip, zinc casting
- ③ JT- Alum. extruded carrier track
- ④ SGA-Alum. extruded subgirt-angle
- ⑤ SG-Alum. extruded sub-girt
- ⑥ GK401 - EPDM spacer gasket
- ⑦ NBK PVC spacer-PT-01
- ⑧ Insulation per design
- ⑨ 5/8" GYP. Board sheathing with air & vapor barrier membrane (Not by NBK)
- ⑩ Vertical steel stud framing, min. 16 ga@ 16" centers (Not by NBK)
- ⑪ 1/4" drill-flex, or approved equal (Not by NBK)
- ⑫ 1/4"-14 x 1" HWS #3 S.S drillflex or similar (Not by NBK)
- ⑬ WGK 01 Wiper gasket (Optional)



<p>CLIENT</p> <p>SCALE 1:2</p>	<p>PROJECT NUMBER</p> <p>PROJECT</p> <p>STANDARD DETAILS TERRAT 28</p>	<p>DRAWING NAME</p> <p>STUDWALL DETAILS</p> <p>DRAWING REFERENCE</p> <p>FLUSH JAMB</p>	<p>PROJECT MANAGER</p> <p>PRINT DATE - PRINT TIME</p> <p>September 3, 2020 -- 07:59</p> <p>DATE</p> <p>Juni 21, 2019</p> <p>SHEET NUMBER</p> <p>NBK-28-05</p>	<p>REVISION</p>	<p>NBK ARCHITECTURAL TERRACOTTA <small>A Hunter Douglas Company</small></p> <hr/> <p>SALES & OPERATIONS</p> <p>NBK North America 40 Tioga Way Suite 250 Mablehead MA 01945 US TELEPHONE: +1-781-639-2862 FAX: +1-781-639-8555</p>
---------------------------------------	---	--	--	-----------------	---