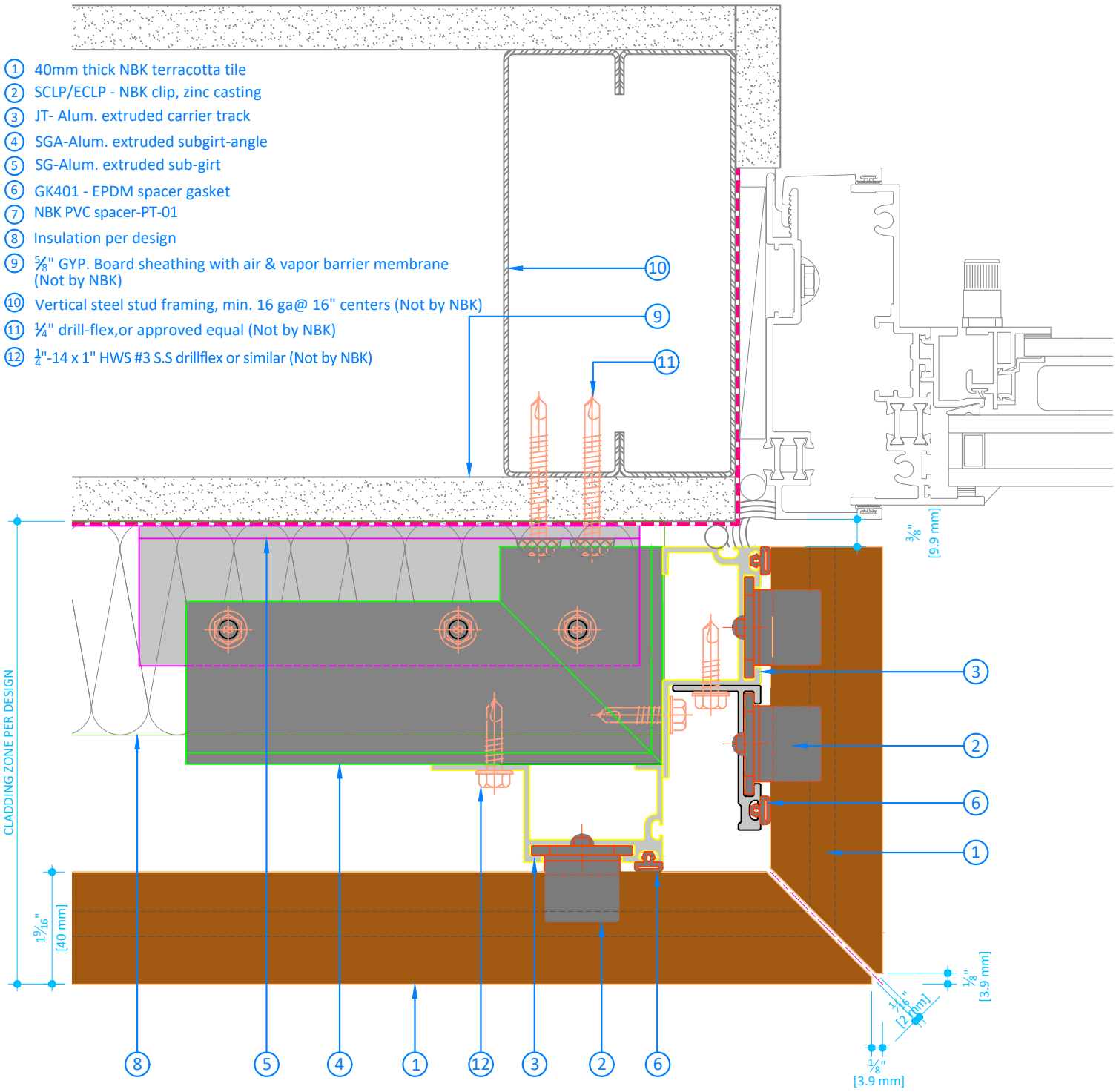


- ① 40mm thick NBK terracotta tile
- ② SCLP/ECLP - NBK clip, zinc casting
- ③ JT- Alum. extruded carrier track
- ④ SGA-Alum. extruded subgirt-angle
- ⑤ SG-Alum. extruded sub-girt
- ⑥ GK401 - EPDM spacer gasket
- ⑦ NBK PVC spacer-PT-01
- ⑧ Insulation per design
- ⑨ 5/8" GYP. Board sheathing with air & vapor barrier membrane (Not by NBK)
- ⑩ Vertical steel stud framing, min. 16 ga@ 16" centers (Not by NBK)
- ⑪ 1/4" drill-flex, or approved equal (Not by NBK)
- ⑫ 1/4"-14 x 1" HWS #3 S.S. drillflex or similar (Not by NBK)



PROJECT NUMBER: _____

DRAWING NAME: **STUDWALL DETAILS**

PROJECT MANAGER: _____

CLIENT: **SCALE 1:2**

PROJECT: **STANDARD DETAILS
TERRART 40**

DRAWING REFERENCE: **JAMB TILE**

PRINT DATE - PRINT TIME: **September 3, 2020 -- 08:28**

DATE: **Juni 21, 2019**

SHEET NUMBER: **NBK-40-08**



SALES & OPERATIONS

NBK North America
40 Tioga Way Suite 250
Mablehead MA 01945 US
TELEPHONE: +1-781-630-2862
FAX: +1-781-630-9555