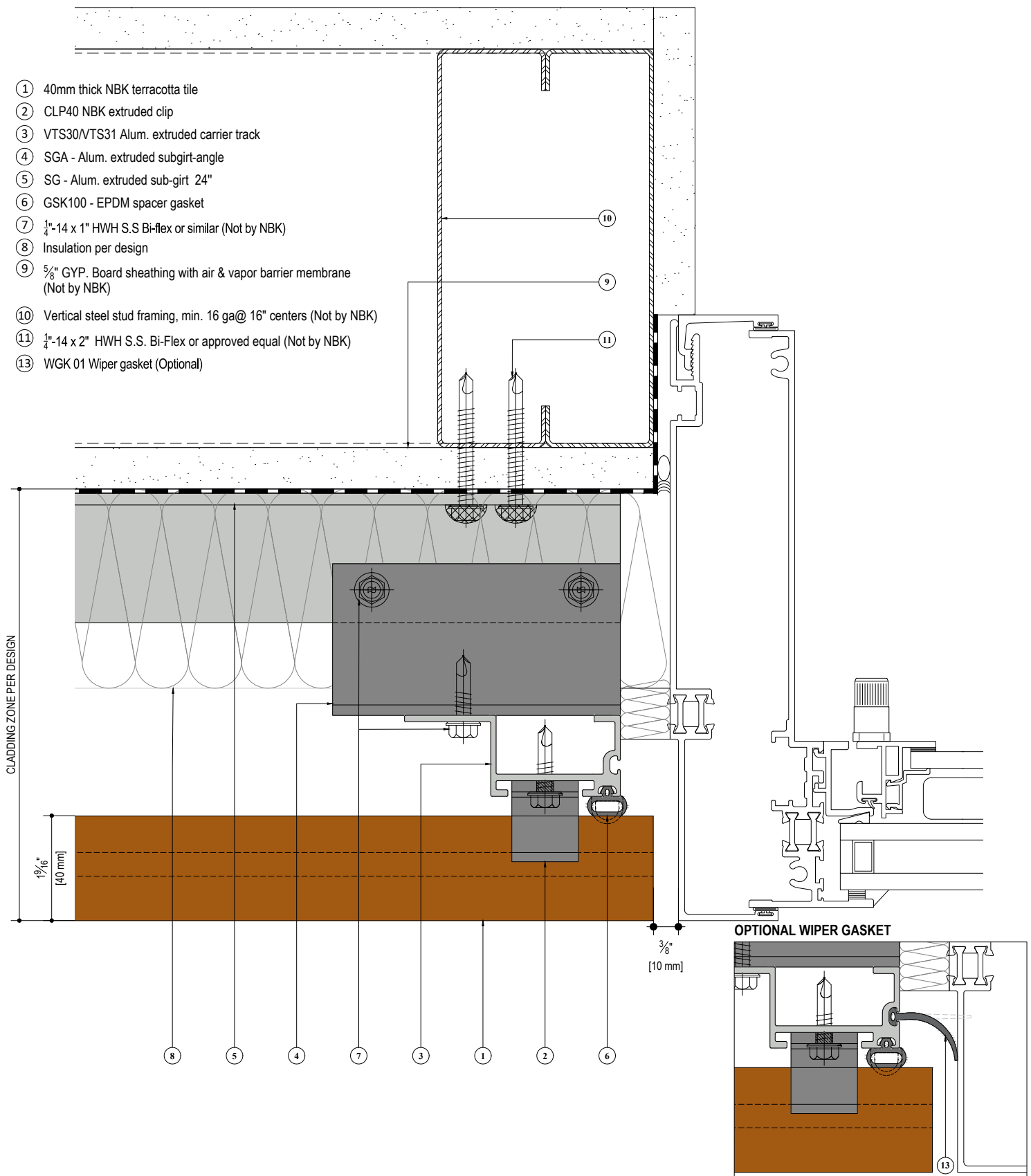


- ① 40mm thick NBK terracotta tile
- ② CLP40 NBK extruded clip
- ③ VTS30/VTS31 Alum. extruded carrier track
- ④ SGA - Alum. extruded subgirt-angle
- ⑤ SG - Alum. extruded sub-girt 24"
- ⑥ GSK100 - EPDM spacer gasket
- ⑦ 1/4"-14 x 1" HWH S.S Bi-flex or similar (Not by NBK)
- ⑧ Insulation per design
- ⑨ 5/8" GYP. Board sheathing with air & vapor barrier membrane (Not by NBK)
- ⑩ Vertical steel stud framing, min. 16 ga@ 16" centers (Not by NBK)
- ⑪ 1/4"-14 x 2" HWH S.S. Bi-Flex or approved equal (Not by NBK)
- ⑬ WGK 01 Wiper gasket (Optional)



SYSTEM: \_\_\_\_\_  
**TERRART 40**

TILE DIRECTION: \_\_\_\_\_  
**HORIZONTAL**

DETAIL: \_\_\_\_\_  
**STANDARD STUDWALL DETAIL**

DRAWING REFERENCE: \_\_\_\_\_  
**FLUSH JAMB**

DETAIL NUMBER: \_\_\_\_\_  
**NBK-HS-40-05**

SCALE: \_\_\_\_\_  
**1:2**

**NBK** | ARCHITECTURAL TERRACOTTA  
 A Hunter Douglas Company

**NBK North America**  
 10 Federal Street, Second Floor  
 Salem, MA 01970  
 Telephone: +1 (781) 639 2662  
 www.nbkterracotta.com

COPYRIGHT: © 2022 All rights reserved